



Shown in Satin Aluminum



320-24
320-32
320-40 **LEM**

LUMINOUS SHALLOW BOWL

Design
Sustainability
Value



print this page



email this page to a colleague



installation instructions



interactive submittal drawings



application photos



FEATURES

- Simple shallow bowl design.
- Available in 24", 32" & 40" dia.
- Easy tool-less relamping.
- 45 degree swivel meets Calif T-24
- Solid hand-finished metal construction.

ECO INFO

METALS: Aluminum and brass with the highest available recycled content for lower embodied energy. Both metals are valuable and recyclable at the end of the product's useful life. For more information see "GENERAL INFO"

FINISHING: Aluminum and Antique Brass finishes are sealed with a hand-applied bees wax. No paint or lacquer is used in order to avoid pollution associated with the manufacture and application of these substances. Satin Brass is clear-coated with a very low VOC water-based coating. Paint finishes are low VOC and oven cured.

ENERGY: Designed exclusively for compact fluorescent lamps using HPF electronic ballasts.

MATERIALS

- Solid brass or aluminum metal work, hand finished
- White acrylic bowl with matte finish

FINISHES

SAL Satin Aluminum

SB Satin Brass

AB Antique Brass

CCP Custom Color Painted finish

Standard metal finishes are hand satined and either waxed or sealed with a water-based clear coat. Other metal finishes are available. Contact factory.

LAMPING

24": 4-CF26 or 32 triple, GX24q base.

32": 4-CF26, 32 or 42W triple, GX24q base.

40": 4-CF42, 57 or 70W triple, GX24q-6 base.

Lamps not included.

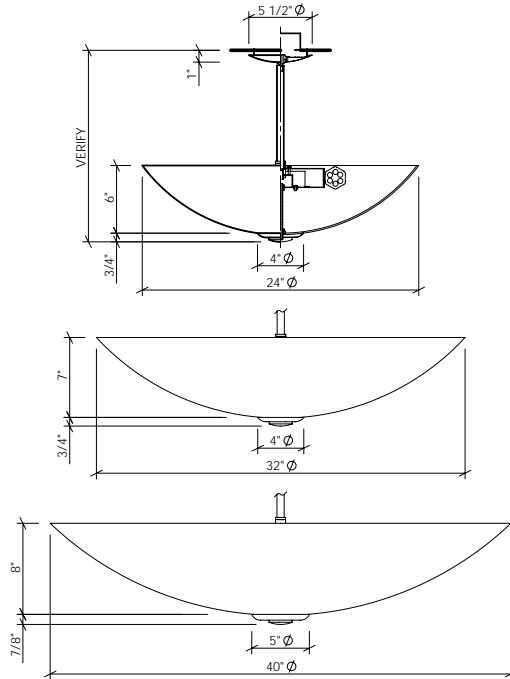
BALLAST

Integral electronic HPF, 120/277V

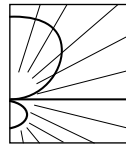
See "GENERAL INFO" for more detail.



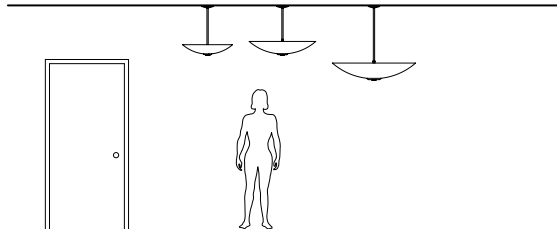
320-24
320-32
320-40 IEM



OPTIONS
FAUX: Hand painted faux finish available, specify **FAUX**
DIMMING: Our standard dimming electronic ballast has range of 100-15%, for 26, 120 volt only. Other dimming ballasts available.
EMERGENCY BATTERY PACK: Remote mounted **EBP** for 24" & 32" dia, specify **REM**. Integral **EBP** for 40" dia, specify **IEM**.



PHOTOMETRICS
 Lighting Sciences Report No. 26213
 Fixture Efficiency: 92.0%



HANG HEIGHT: Standard overall hang height is 24" for 24" dia and 32" dia; 36" for 40" dia (ceiling to bottom of fixture). There is an additional charge for hang heights greater than standard. Minimum recommended is 18". Standard canopy will accommodate a sloped ceiling of 40 degrees

MOUNTING: Standard J-box or plaster ring. Safety cable provided

WEIGHT: 24" 15lbs 40" 20lbs
 32" 17lbs

VARIATIONS / MODIFICATIONS

- Special finishes
- Different bowl sizes
- Addition of decorative detail
- Alternate stem configurations

SPEC GUIDE SAMPLE SPEC: 320-24-CF4/26-120-SB-DIM-24" OA

CAT#	SIZE	LAMPING	VOLT	FINISH	OPTION	OA
<input type="checkbox"/> 320	<input type="checkbox"/> 24	<input type="checkbox"/> CF4/26	<input type="checkbox"/> 120	<input type="checkbox"/> SAL	<input type="checkbox"/> FAUX	<input type="checkbox"/> 24" STD
	<input type="checkbox"/> 32	<input type="checkbox"/> CF4/32	<input type="checkbox"/> 277	<input type="checkbox"/> SB	<input type="checkbox"/> DIM	<input type="checkbox"/> SPECIFY
	<input type="checkbox"/> 40	<input type="checkbox"/> CF4/42		<input type="checkbox"/> AB	<input type="checkbox"/> REM	
		<input type="checkbox"/> CF4/57		<input type="checkbox"/> CCP	<input type="checkbox"/> IEM	
		<input type="checkbox"/> CF4/70				

