

UPDATED 8/15

314-20 **LED** New

314-30 **LED**

INDIRECT BOWL PENDANT

Design
Sustainability
Value



print this page



email this page to a colleague



installation instructions



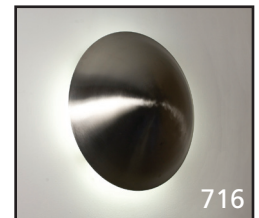
interactive submittal drawings



Shown with Satin Aluminum



COMPANIONS



FEATURES

- Classic shallow bowl design.
- Purpose-built design for LED only.
- High efficacy and high CRI.
- Layered light with soft, diffuse uplight & direct downlight.

ECO INFO

ENERGY: Designed exclusively for LEDs using HPF electronic drivers.

METALS: Aluminum with the highest available recycled content for lower embodied energy. Aluminum is valuable and recyclable at the end of the product's useful life. For more information see "GENERAL INFO"

FINISHING: Aluminum finish is sealed with a hand-applied bees wax. No paint or lacquer is used in order to avoid pollution associated with the manufacture and application of these substances. Paint finishes are low VOC and oven cured.

MATERIALS

- Spun aluminum bowl.
- Satin ice lens for downlight.

FINISHES

SAL Satin Aluminum (Hand satined and waxed.)

MW Matte White

CCP Custom Color Painted finish

LAMPING

LED: 3 or 4-16W uplight & 1-7W downlight. The 16W is rated at 2120lm, 3000K & 80+CRI. The 7W is rated, 2700K & 90 CRI. Fixture is wired for two circuits.

DRIVER

Integral HPF electronic driver is multi-volt 120/277 and is 0-10V dimmable. Triac 2-wire dimming available 120V only.



999 Montague St • San Leandro, CA 94577 • ph 510.357.0171 • fax 510.357.3832 • www.bordenlighting.com



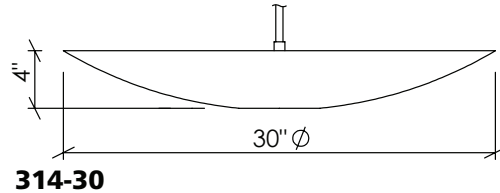
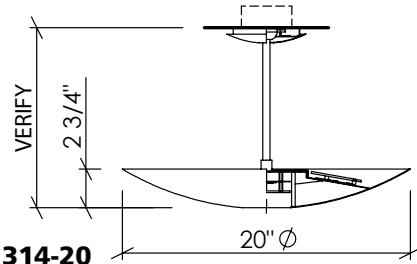
Shown with optional Aircraft Cable Suspension.

OPTIONS

Available with Aircraft Cable suspension. Power is provided by draped SJ cord. Specify **AC**.

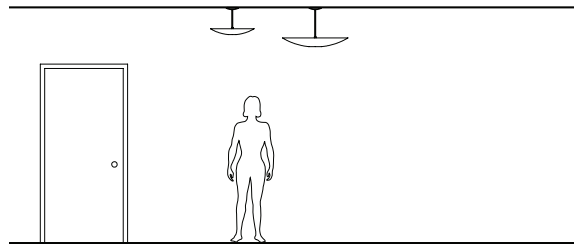
314-20

314-30



PHOTOMETRICS

Use Light Lab Report No. L11133001R01 for the 314. Distribution is the same. Fixture Efficacy: 77 lm/w, 94% uplight & 6% downlight. Tested LEDs rated at 1850lm (up); new LEDs rated at 2120lm or 15% more. (Downlight remains the same). Adjust light levels accordingly.



MOUNTING: Standard J-box or plaster ring.

WEIGHT: 8 lbs

VARIATIONS / MODIFICATIONS

- Special finishes
- Addition of decorative detail

SPEC GUIDE

SAMPLE SPEC: 314-20-LED3/17+1-7-120-SAL-24"OA

CAT#	-	LAMPING	-	VOLT	-	FINISH	-	OPTION	-	OA
<input type="checkbox"/> 314-20		<input type="checkbox"/> LED 3/16+1/7		<input type="checkbox"/> 120		<input type="checkbox"/> SAL		<input type="checkbox"/> AC		<input type="checkbox"/> 24" STD
<input type="checkbox"/> 314-30		<input type="checkbox"/> LED 4/16+1/7		<input type="checkbox"/> 277		<input type="checkbox"/> MW				<input type="checkbox"/> SPECIFY
						<input type="checkbox"/> CCP				



IBEW Labelled



Our fixtures are handcrafted here in the USA using the highest quality materials.



999 Montague St • San Leandro, CA 94577 • ph 510.357.0171 • fax 510.357.3832 • www.bordenlighting.com