

UPDATED 8/15

307 LED New improved LED array & dimming driver.

FABRIC SHADE DRUM

Design
Sustainability
Value



print this page



email this page to a colleague



installation instructions



interactive submittal drawing

DESIGN: RANDY BORDEN



Shown with cream linen shade.



COMPANIONS



303



503

FEATURES

- Purpose-built design for LED only.
- High efficacy and high CRI.
- Classic drum shape available with a variety of fabric shades.
- Diffuse uplight and indirect downlight.

ECO INFO

ENERGY: Designed exclusively for LEDs using HPF electronic drivers.

FABRIC SHADE: Available with sustainably produced fabrics that are backed with a US made paper backing, that replaces the standard styrene backing. See OPTIONAL FABRICS on Pg. 2.

METALS: Aluminum with the highest available recycled content for lower embodied energy. Aluminum is valuable and recyclable at the end of the product's useful life. For more information see "GENERAL INFO"

FINISHING: Aluminum finishes is sealed with a hand-applied bees wax. No paint or lacquer is used in order to avoid pollution associated with the manufacture and application of these substances. Paint finishes are low VOC and oven cured.

MATERIALS

- Fabric drum shade.
- White acrylic top lens.
- Aluminum heat sink disks.

FINISHES

SAL Satin Aluminum (Hand satined and waxed.)

MW Matte White

CCP Custom Color Painted finish

LAMPING

1-23W LED array; 2810 lumens, 3000K, 82 CRI and 90 LM/W. LED array is included and is mounted in a holder and is replaceable.

BALLAST

Integral electronic HPF, 120V/277V and is 0-10V dimmable.



999 Montague St • San Leandro, CA 94577 • ph 510.357.0171 • fax 510.357.3832 • www.bordenlighting.com

OPTIONS

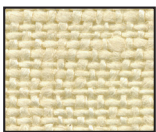
FABRIC SHADE: Standard, or default, shade is Cream Linen. Optional shade fabrics are shown below. Call factory for other fabrics.

STEM: Available with metal stem and swivel canopy, specify **STEM**.



STANDARD FABRIC
Cream Linen

OPTIONAL FABRICS: Imported 100% flax linen.



VAN Vanilla



WHT White



OAT Oatmeal

OPTIONAL ECO-FABRICS:

Sustainably produced hemp and organic cotton.

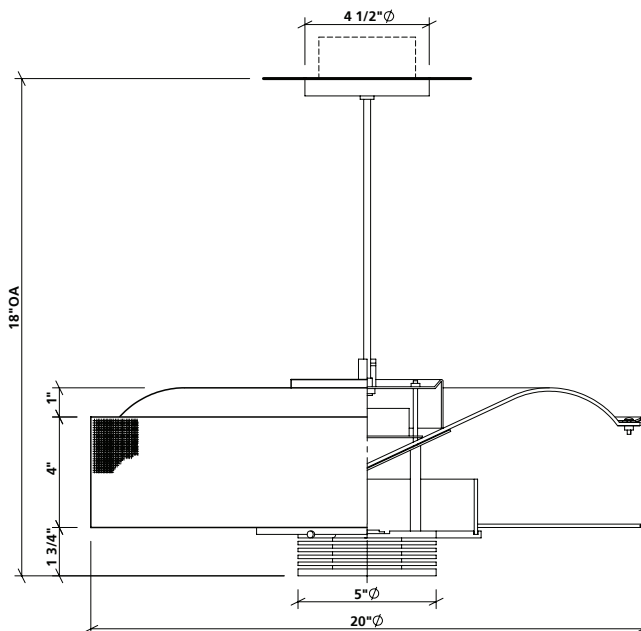


CRH
Cream Hemp



HOC Hemp/
Organic Cotton

Click
HERE
to learn more
about shade fabrics



PHOTOMETRICS

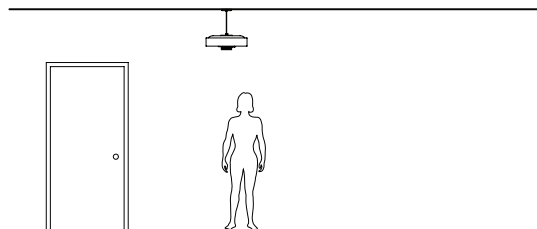
Light Lab Report L05131402

Fixture Efficacy: 50 lm/w

61% uplight & 39% downlight

Tested LED rated at 2100lm; new LED
rated at 2810lm or 34% more.

Adjust light levels accordingly.



NOTE: Standard electronic driver is multi-volt and is 0-10V dimmable.

MOUNTING: Standard J-box or plaster ring.

WEIGHT: 5 lbs

VARIATIONS / MODIFICATIONS

- Special finishes
- Special shade fabrics
- Addition of decorative detail

SPEC GUIDE

SAMPLE SPEC: 307-LED/24-277-SAL-OAT-24"OA

CAT#	-	LAMPING	-	VOLT	-	FINISH	-	OPTION	-	OA
<input type="checkbox"/> 307		<input type="checkbox"/> LED/23W		<input type="checkbox"/> 120		<input type="checkbox"/> SAL		<input type="checkbox"/> VAN (Vanilla)		<input type="checkbox"/> 24" STD
				<input type="checkbox"/> 277		<input type="checkbox"/> MW		<input type="checkbox"/> WHT (White)		<input type="checkbox"/> SPECIFY
						<input type="checkbox"/> CCP		<input type="checkbox"/> OAT (Oatmeal)		
								<input type="checkbox"/> CRH (Cream Hemp)		
								<input type="checkbox"/> HOC (Hemp/Organic Cotton)		
								<input type="checkbox"/> STEM		
								<input type="checkbox"/> REM		



IBEW Labelled

**LIGHTING
FIXTURES**



Our fixtures are handcrafted
here in the USA using the
highest quality materials.



999 Montague St • San Leandro, CA 94577 • ph 510.357.0171 • fax 510.357.3832 • www.bordenlighting.com