

UPDATED 11/12

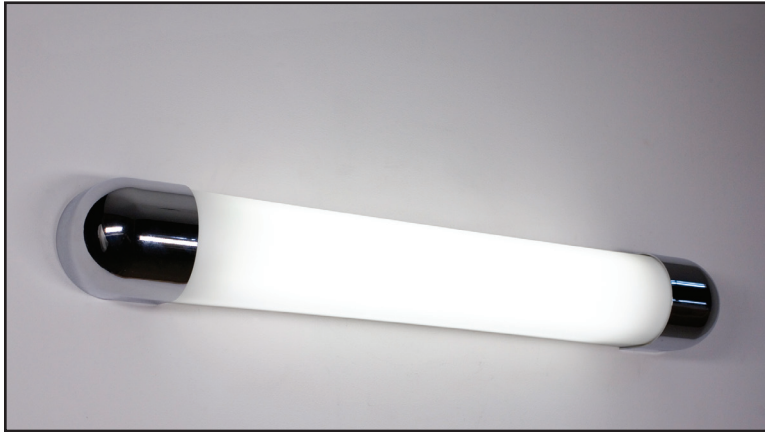
**573-22** ADA  
**573-30** ADA  
**573-41** ADA

**VANITY FIXTURE**

Design  
Sustainability  
Value



573-22 shown in Satin Aluminum



573-30 shown in Polished Chrome



print this page



email this page to a colleague



installation instructions



interactive submittal drawing



**FEATURES**

- ADA compliant.
- Crisp, classic design
- Available in two sizes and with trim bar option.
- All aluminum construction suited to damp interior locations.

**ECO INFO**

**METALS:** Die cast trim is made from 100% recycled aluminum. Other aluminum parts have the highest available recycled content for lower embodied energy. All metals are valuable and recyclable at the end of the product's useful life. For more information see "GENERAL INFO"

**FINISHING:** Solid, natural metal finishes are sealed with a hand-applied bees wax. No paint or lacquer is used in order to avoid pollution associated with the manufacture and application of these substances. Clear coat finishes are available. Paint finishes are low VOC and oven cured.

**ENERGY:** Designed exclusively for compact fluorescent lamps using HPF electronic ballasts.

**MATERIALS**

- Solid aluminum metalwork, hand finished.
- Luminous shield is extruded white acrylic with a matte finish.

**FINISHES**

- SAL** Satin Aluminum
- PC** Polished Chrome
- MW** Matte White
- CCP** Custom Color Painted finish

Standard metal finishes are hand satined and waxed. Low VOC lacquer available. Other metal finishes are available. Contact factory.

**LAMPING**

573-22: 1-CF39TT, 2GII base.  
573-30: 2-T5/14W or 2-T5/24HO.  
573-40: 2-T5/21W or 2-T5/39HO.  
Lamps not included.

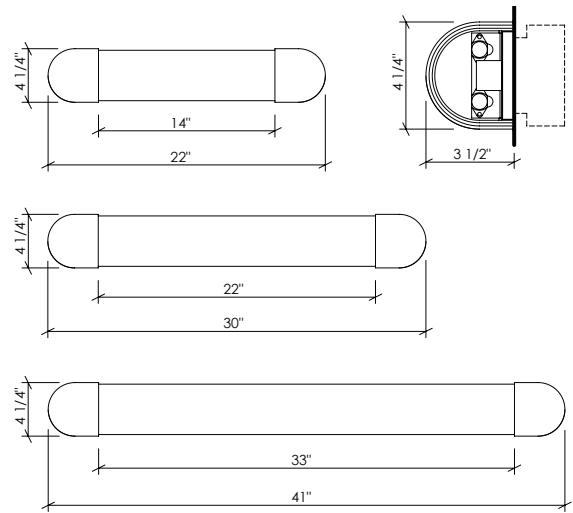
**BALLAST**

Integral electronic HPF, 120V/277V.



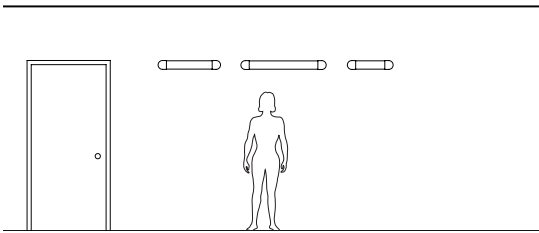


**573-22**  
**573-30**  
**573-41**



573-20 shown with optional Trim Bars & Vertical Mounting.

**OPTIONS**  
**TRIM BARS:** See photos above. Call factory for special trim bar designs.  
**EMERGENCY BATTERY PACK:** Remote mounted EBP, specify REM.



**VARIATIONS / MODIFICATIONS**

- Special finishes
- Special sizes
- Addition trim bar designs.
- Addition of decorative detail
- Custom laser cut patterned overlays

**MOUNTING:** NOTE: Standard 3" Ø or plaster ring or switch box.

**WEIGHT:** 22" 5lbs  
 30" 7lbs  
 41" 10lbs

**SPEC GUIDE** SAMPLE SPEC: 573-30-T5/24-SAL-TB

CAT#	SIZE	LAMPING	VOLT	FINISH	OPTION
573	22	CF1/39	120	SAL	REM
	30	2-T5/14	277	PC	TB
	41	2-T5/24H0		MW	
		2-T5/21		CCP	
		2-T5/39H0			

