

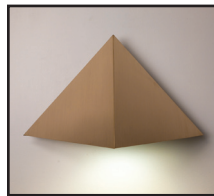
# 732

## HALF PYRAMID DOWNLIGHT WET LOCATION

Design  
Sustainability  
Value



Shown in Natural Bronze with hexcel louver.



print this page



email this page to a colleague



installation instructions



interactive submittal drawing

### FEATURES

- Classic half-pyramid.
- Cutoff design combined with low glare.
- Electronic ballast for CF and MH lamping.
- Available with photocell.

### ECO INFO

**METALS:** Hood is made from bronze with 90% recycled content, stainless steel or for painted finishes, aluminum with 30-40% recycled content. Backplate is made from 100% recycled aluminum. All metals are valuable and recyclable at the end of the product's useful life. For more information see "GENERAL INFO"

**FINISHING:** Solid, natural metal finishes for the hood are hand satined. No paint or lacquer is used in order to avoid pollution associated with the manufacture and application of these substances. Paint finishes are low VOC and oven cured..

**ENERGY:** Designed exclusively for low energy compact fluorescent and metal halide lamps using HPF electronic ballasts.

### MATERIALS

- Solid bronze, aluminum or stainless steel hood. Cast aluminum backplate.
- High transmission clear refractive acrylic for CF lamping.
- Aluminum hexcel louver.
- Refractive tempered glass for MH lamping.

### FINISHES

<b>NBZ</b>	Natural Bronze	<b>CAA</b>	Clear Anodized Aluminum
<b>SSS</b>	Satin Stainless Steel	<b>CCP</b>	Custom Color Painted Finish
<b>SGB</b>	Semi-Gloss Black	<b>SGS</b>	Semi-Gloss Silver
<b>SGW</b>	Semi-Gloss White	<b>SGBZ</b>	Semi-Gloss Bronze

### LAMPING

CF: 1 or 2 CF26, 32W or 42WTTT, GX24q base

MH: 1-70W or 100W medium base ED17

Lamps not included.

LED: 2-11W arrays rated at 1550 lumens each or

2-16W arrays rated at 2120 each. Both 3000K and 80+ CRI.

LED arrays are included and are replaceable.

### BALLAST

CF & MH: Integral electronic HPF, 120V/277V.

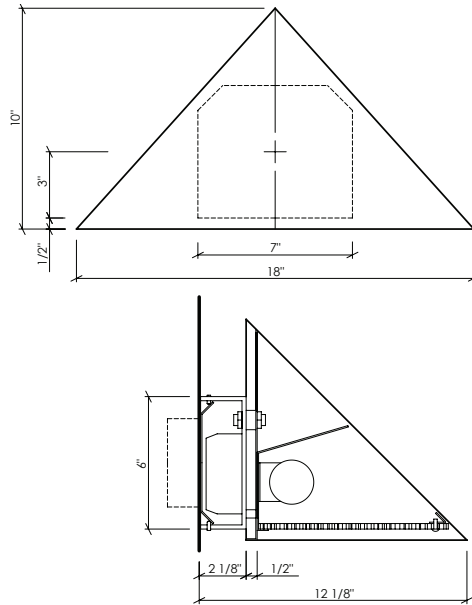
LED: Integral HPF electronic driver, 120/277V, 0-10 dimmable.

2-wire triac dimming available for 120V.



Shown in Satin SS.

## 732 WET LOCATION



### OPTIONS

#### LENS:

**CF:** High transmission clear refractive acrylic or optional hexcel louver with black finish specify **HXL**.

**NOTE:** The optional hexcel open cell louver offers lower glare, and higher output.

**MH:** Refractive tempered glass or optional hexcel louver with black finish **HXL**.

**NOTE:** The optional hexcel louver requires an open fixture rated lamp.

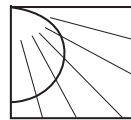
**PHOTOCELL:** For photocell specify **PH**.

**EMERGENCY BATTERY PACK:** Remote mounted **EBP**, specify **REM**.

**NOTE:** This fixture is suitable for wet or dry locations. For wet locations use only as a downlight.

**MOUNTING:** Standard J-box or plaster ring.

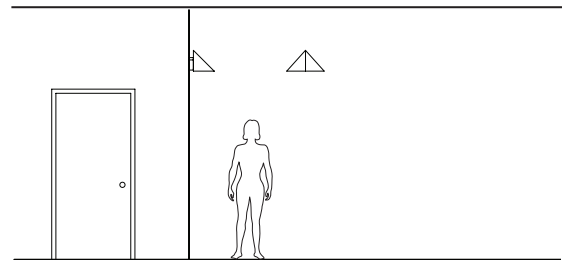
**WEIGHT:** 8 lbs



### PHOTOMETRICS

**CF:** Use LSI Report NO. 26216 for Model 720 and adjust for lumens.

**LED:** Use LSI Report No. 30845 for Model 721. See note on 721 catalog page.



### VARIATIONS / MODIFICATIONS

- Special finishes
- Special sizes

## SPEC GUIDE SAMPLE SPEC: 732-CF1/42-120-SGB-IEM

CAT#	-	LAMPING	-	VOLT	-	FINISH	-	OPTION
<input type="checkbox"/> 732		<input type="checkbox"/> CF1/26		<input type="checkbox"/> 120		<input type="checkbox"/> NBZ		<input type="checkbox"/> HXL
		<input type="checkbox"/> CF1/32		<input type="checkbox"/> 277		<input type="checkbox"/> SSS		<input type="checkbox"/> PH
		<input type="checkbox"/> CF1/42				<input type="checkbox"/> SGB		<input type="checkbox"/> REM
		<input type="checkbox"/> MH 70				<input type="checkbox"/> SGW		
		<input type="checkbox"/> MH 100				<input type="checkbox"/> SGBZ		
		<input type="checkbox"/> LED 2/11				<input type="checkbox"/> SGS		
		<input type="checkbox"/> LED 2/16				<input type="checkbox"/> CCP		

Learn more about  
Natural Bronze  
[click here](#)



IBEW Labelled



Our fixtures are handcrafted here in the USA using the highest quality materials.



999 Montague St • San Leandro, CA 94577 • ph 510.357.0171 • fax 510.357.3832 • [www.bordenlighting.com](http://www.bordenlighting.com)