



Shown in Natural Bronze with optional hexcel louver.



719

WEDGE DOWNLIGHT WET LOCATION

Design
Sustainability
Value



print this page



email this page to a colleague

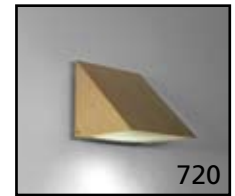


installation instructions



interactive submittal drawing

COMPANION



FEATURES

- Smaller version of 720.
- Solid bronze or stainless steel construction ensures long life.
- Cutoff design combined with low glare.
- Part of a family of three different sizes.

MATERIALS

- Solid bronze or stainless steel hood. Aluminum is used for painted finishes. Cast aluminum backplate is painted to match hood finish.
- High transmission clear refractive acrylic lens.
- Aluminum hexcel louver.

FINISHES

- NBZ** Natural Bronze
- SSS** Satin Stainless Steel
- SGB** Semi-Gloss Black
- SGW** Semi-Gloss White
- SGBZ** Semi-Gloss Bronze
- CCP** Custom Color Painted finish
- CAA** Clear Anodized Aluminum

*Learn more about
Natural Bronze
click here*

Standard metal finishes are hand satined. Other metal finishes are available. Contact factory.

LAMPING

1 CF13DTT, G24q base or 1-CF18WTTT, 2Gx24q.
Lamps not included.

BALLAST

Integral electronic ballast for dedicated voltage.
See "GENERAL INFO" for more detail.

ECO INFO

METALS: Hood is made from bronze with 90% recycled content or for painted finishes, aluminum with 30-40% recycled content. Backplate is made from 100% recycled aluminum. All metals are valuable and recyclable at the end of the product's useful life. For more information see "GENERAL INFO"

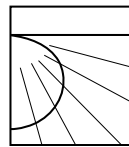
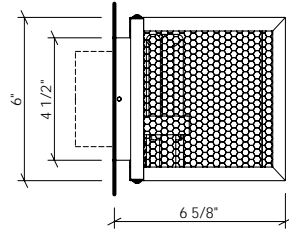
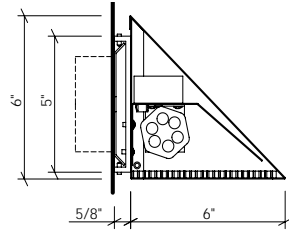
FINISHING: Solid, natural metal finishes are hand satined. No paint or lacquer is used on the hood in order to avoid pollution associated with the manufacture and application of these substances. Paint finishes are low VOC and oven cured..

ENERGY: Designed exclusively for compact fluorescent lamps using electronic ballasts.

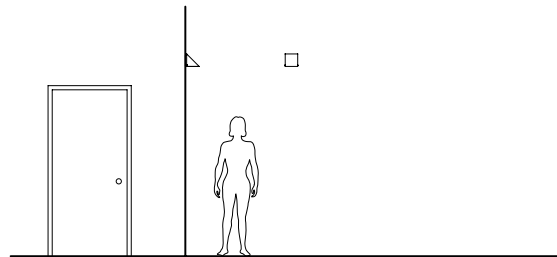


719

WET LOCATION



PHOTOMETRICS
See LSI Report No. 23008 for model 720.



OPTIONS

LENS: High transmission clear refractive acrylic is standard. For optional hexcel louver, specify **HXL**.

NOTE: The optional hexcel open cell louver offers lower glare with higher output directly below the fixture, but less light to the sides and front.

EMERGENCY BATTERY PACK: Remote mounted EB, specify **REM**.

NOTE: This fixture is suitable for wet or dry locations. For wet locations use only as a downlight.

MOUNTING: Standard J-box or plaster ring.

WEIGHT: 4lbs

VARIATIONS / MODIFICATIONS

- Special finishes
- Special sizes

NOTE: This fixture is not supplied with a multi-volt ballast. Voltage must be specified.

SPEC GUIDE

SAMPLE SPEC: 719-CF1/18-120-NBZ-HXL

CAT#	LAMPING	VOLT	FINISH	OPTION
<input type="checkbox"/> 719	<input type="checkbox"/> CF1/13	<input type="checkbox"/> 120	<input type="checkbox"/> NBZ	<input type="checkbox"/> HXL
	<input type="checkbox"/> CF1/18	<input type="checkbox"/> 277	<input type="checkbox"/> SSS	<input type="checkbox"/> REM
			<input type="checkbox"/> SGB	
			<input type="checkbox"/> SGW	
			<input type="checkbox"/> SGBZ	
			<input type="checkbox"/> CCP	

Learn more about
Natural Bronze
[click here](#)

