



Shown in Natural Bronze with optional hexcel louver.



719 UPDATED
NOV. 2011

WEDGE DOWNLIGHT
WET LOCATION

Design
Sustainability
Value



print this page



email this page to a colleague



installation instructions



interactive submittal drawing

COMPANION



FEATURES

- Smaller version of 720.
- Solid bronze or stainless steel construction ensures long life.
- Cutoff design combined with low glare.
- Part of a family of three different sizes.

MATERIALS

- Solid bronze or stainless steel hood. Aluminum is used for painted finishes. Cast aluminum backplate is painted to match hood finish.
- High transmission clear refractive acrylic lens.
- Aluminum hexcel louver.

FINISHES

- | | |
|----------------------------------|--|
| NBZ Natural Bronze | CCP Custom Color Painted finish |
| SSS Satin Stainless Steel | CAA Clear Anodized Aluminum |
| SGB Semi-Gloss Black | SGS Semi-Gloss Silver |
| SGW Semi-Gloss White | |
| SGBZ Semi-Gloss Bronze | |

*Learn more about
Natural Bronze
click here*

LAMPING

Fluorescent: 1 CF13DTTT, G24q base or 1-CF18WTTT, 2Gx24q.
Lamps not included.
LED: 2-6.3 arrays, supplied with fixture.

BALLAST

CF: Integral electronic HPF, 120V only.
See "GENERAL INFO" for more detail.
LED: Integral HPF electronic driver.
120 volt only.

ECO INFO

METALS: Hood is made from bronze with 90% recycled content or for painted finishes, aluminum with 30-40% recycled content. Backplate is made from 100% recycled aluminum. All metals are valuable and recyclable at the end of the product's useful life. For more information see "GENERAL INFO"

FINISHING: Solid, natural metal finishes are hand satined. No paint or lacquer is used on the hood in order to avoid pollution associated with the manufacture and application of these substances. Paint finishes are low VOC and oven cured..

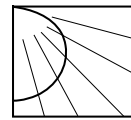
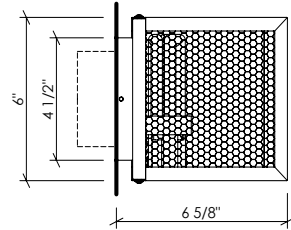
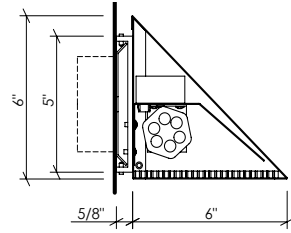
ENERGY: Designed exclusively for compact fluorescent lamps using electronic ballasts.





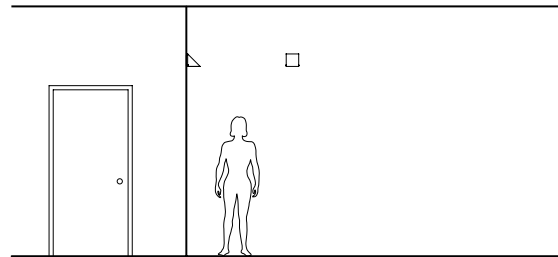
719

WET LOCATION



PHOTOMETRICS

See LSI Report No. 27864 for model 718. The 719 will produce twice the light.



OPTIONS

LENS: High transmission clear refractive acrylic is standard. For optional hexcel louver, specify **HXL**.

NOTE: The optional hexcel open cell louver offers lower glare with higher output directly below the fixture, but less light to the sides and front.

EMERGENCY BATTERY PACK: Remote mounted EB, specify **REM**.

NOTE: This fixture is suitable for wet or dry locations. For wet locations use only as a downlight.

LED NOTE: 2-6.3 arrays rated at 420 lumens each, 3000K & 82 CRI. LM-80 data available.

MOUNTING: Standard J-box or plaster ring.

WEIGHT: 4lbs

VARIATIONS / MODIFICATIONS

- Special finishes
- Special sizes

NOTE: This fixture is not supplied with a multi-volt ballast. Voltage must be specified.

SPEC GUIDE SAMPLE SPEC: 719-CF1/18-120-NBZ-HXL

CAT#	LAMPING	VOLT	FINISH	OPTION
<input type="checkbox"/> 719	<input type="checkbox"/> CF1/13	<input type="checkbox"/> 120	<input type="checkbox"/> NBZ	<input type="checkbox"/> HXL
	<input type="checkbox"/> CF1/18	<input type="checkbox"/> 277	<input type="checkbox"/> SSS	<input type="checkbox"/> REM
	<input type="checkbox"/> LED/2-6		<input type="checkbox"/> SGB	
			<input type="checkbox"/> SGW	
			<input type="checkbox"/> SGBZ	
			<input type="checkbox"/> CCP	

Learn more about
Natural Bronze
[click here](#)

