



DESIGN: RANDY BORDEN

Shown with SGBZ paint finish.



710 UPDATED
FEB. 2011

DOMED DOWNLIGHT
WET LOCATION
LED

Design
Sustainability
Value



print this page



email this page to a colleague



installation instructions



interactive submittal drawing

FEATURES

- Low glare downlight with play of light on outer ring
- Unique shape.
- Suitable for wet or dry locations.
- Available with LEDs.

MATERIALS

- Solid aluminum metal work.
- High transmission clear refractive acrylic.
- Aluminum hexcel louver.

FINISHES

- SGB** Semi-gloss black
- SGW** Semi-gloss white
- SGS** Semi-gloss silver
- SGBZ** Semi-gloss bronze
- CCP** Custom Color Painted finish

LAMPING

Fluorescent: 1-CF26W, 32W or 42WTTT Gx24q base.
Lamps not included.

LED: 1-18W array, supplied with fixture.

BALLAST/POWER SUPPLY

CF: Integral electronic HPF, 120V/277V.
See "GENERAL INFO" for more detail.

LED: Integral HPF electronic 24V driver.
120 volt only. Call factory for 277V.

ECO INFO

METALS: Cast mounting back is made from 100% recycled aluminum. Other aluminum parts have the highest available recycled content for lower embodied energy. All metals are valuable and recyclable at the end of the product's useful life. For more information see "GENERAL INFO"

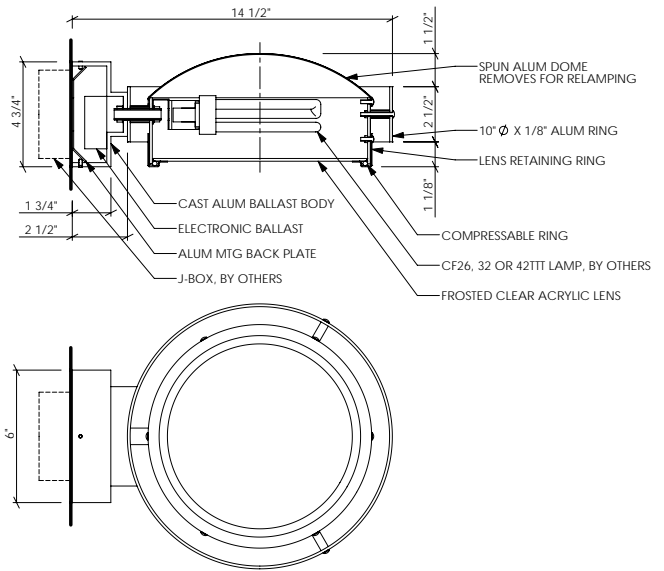
FINISHING: Paint finishes are low VOC and oven cured.

ENERGY: Designed exclusively for low energy compact fluorescent lamps, using HPF electronic ballasts or LED's with integral power supply.



Shown with SGB paint finish.

710 WET LOCATION



OPTIONS

LENS: High transmission clear refractive acrylic, or optional hexcel louver. Specify HXL

NOTE: The optional hexcel open cell louver offers lower glare with higher output directly below the fixture, but less light to the sides and front.

PHOTOCELL: Photocell available, specify PH.

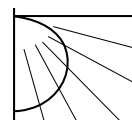
EMERGENCY BATTERY PACK: Remote mounted EBP, specify REM.

CF NOTE: Standard electronic ballast is multi-volt and multi-wattage. Fixture will accommodate 26, 32 or 42 watt lamps. (Ballast for 13w will only operate 13w lamp.)

LED NOTE: 1-18w array is rated for 1200 lumens, 3000K & CRI 82. LM-80 data available – call factory.

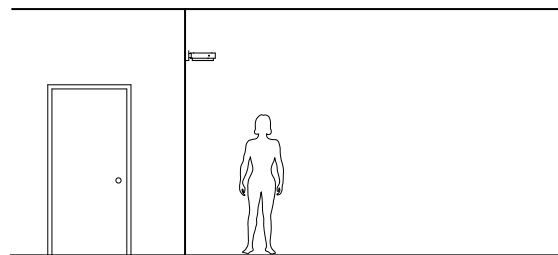
MOUNTING: Standard J-box or plaster ring.

WEIGHT: 5lbs



PHOTOMETRICS

Lighting Sciences Report No. 23007
Fixture Efficiency: 31.9%



VARIATIONS / MODIFICATIONS

- Special finishes
- Addition of decorative detail

SPEC GUIDE SAMPLE SPEC: 710-CF1/26-120-SGB-HXL

CAT#	LAMPING	VOLT	FINISH	OPTION
<input type="checkbox"/> 710	<input type="checkbox"/> CF1/26	<input type="checkbox"/> 120	<input type="checkbox"/> SGB	<input type="checkbox"/> HXL
	<input type="checkbox"/> CF1/32	<input type="checkbox"/> 277	<input type="checkbox"/> SGW	<input type="checkbox"/> PH
	<input type="checkbox"/> CF1/42		<input type="checkbox"/> SGS	<input type="checkbox"/> REM
	<input type="checkbox"/> LED/18		<input type="checkbox"/> SGBZ	
			<input type="checkbox"/> CCP	

