



Shown in matte white finish.



**110-13**  
**110-17**



## LUMINOUS BOWL

Design  
Sustainability  
Value



print this page



email this page to a colleague



installation instructions



interactive submittal drawing

### FEATURES

- Simple clean design.
- Available in 13" & 17" dia.
- Tool-free relamping.

### ECO INFO

**ENERGY:** Designed exclusively for compact fluorescent lamps.

### MATERIALS

- Cold rolled steel body.
- Luminous bowl is white acrylic

### FINISHES

**MW** Matte White

**SNK** Satin Nickel

**CCP** Custom Color Painted finish

### LAMPING

13": 1-T5 22W circline.

17": 1-T5 40W or 55W circline.

Lamps not included.

### BALLAST

Integral electronic NPF, 120V. HPF available.

See "GENERAL INFO" for more detail.

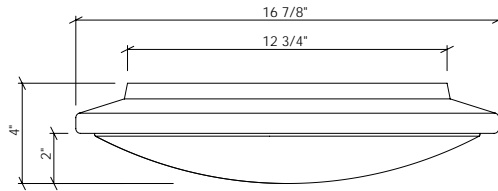
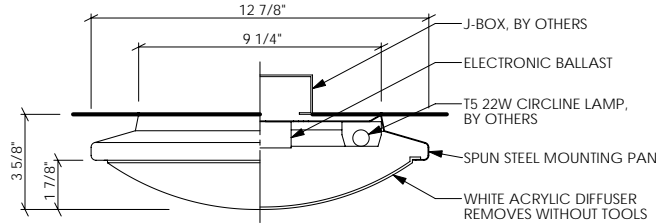


13" Shown in Satin Nickel.

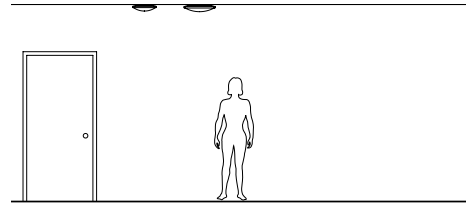


17" Shown in Matte White.

# 110-13 110-17 LUMINOUS BOWL



LAMPING: 1- T5/40W, 1- T5/55W



### OPTIONS

**NORMAL POWER FACTOR BALLAST:** This fixture is supplied with a 120 volt NPF ballast. For HPF add the suffix as follows: 120HPF.

**NOTE:** HPF is standard for 277 volt.

**EMERGENCY BATTERY PACK:** Remote mounted EBP, specify REM.

**MOUNTING:** Standard J-box or plaster ring.

**WEIGHT:** 3 lbs

### SPEC GUIDE SAMPLE SPEC: 110-13-T5/22-120-MW

CAT#	SIZE	LAMPING	VOLT	FINISH	OPTION
<input type="checkbox"/> 110	<input type="checkbox"/> 13"	<input type="checkbox"/> T5/22	<input type="checkbox"/> 120	<input type="checkbox"/> MW	<input type="checkbox"/> REM
	<input type="checkbox"/> 17"	<input type="checkbox"/> T5/40	<input type="checkbox"/> 120HPF	<input type="checkbox"/> CCP	
		<input type="checkbox"/> T5/55	<input type="checkbox"/> 277HPF	<input type="checkbox"/> SNK	

