

109-12

109-20 TEM



LUMINOUS DRUM

Design
Sustainability
Value



print this page



email this page to a colleague



installation instructions



interactive submittal drawing

DESIGN: DAVID MALMAN



109-12 shown in Satin Aluminum



FEATURES

- Simple clean design.
- Decorative solid metal ring
- Available in two sizes.
- Tool-free relamping.

ECO INFO

METALS: Aluminum with the highest available recycled content for lower embodied energy. Aluminum is valuable and recyclable at the end of the product's useful life. For more information see "GENERAL INFO"

FINISHING: Aluminum is sealed with a hand-applied bees wax. No paint or lacquer is used in order to avoid pollution associated with the manufacture and application of these substances. Paint finishes are low VOC and oven cured.

ENERGY: Designed exclusively for compact fluorescent lamps using HPF electronic ballasts.

MATERIALS

- Solid aluminum metal work, hand finished
- Luminous drum is white acrylic

FINISHES

SAL Satin Aluminum

MW Matte White

CCP Custom Color Painted finish

Standard metal finishes are hand satined and either waxed or sealed with a water-based clear coat. Other metal finishes are available. Contact factory.

LAMPING

109-12: 1-CF26, 32 or 42WTTT, Gx24q base.

109-20: 2-CF26, 32 or 42, Gx24q base or T5 40 or 55W.

Lamp not included.

BALLAST

Integral electronic HPF, 120V/277V.

See "GENERAL INFO" for more detail.

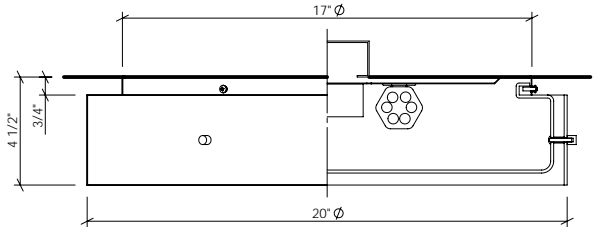
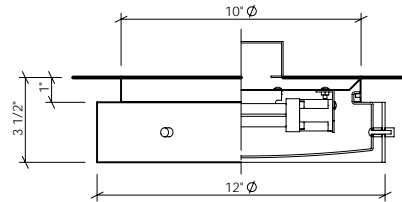




109-20 shown in Satin Aluminum.

109-12

109-20 **IEM**



OPTIONS

DIMMING: Available electronic ballast with a dimming range of 100-15%, 120-volt only. Ballast dimmable from any incandescent dimmer. Other dimming ballasts available.

This option is available 1 - lamp 26, 32 & 42 W and 2-26 W only.

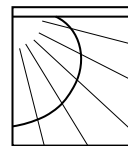
NORMAL POWER FACTOR BALLAST: This fixture is available with a NPF 120V electronic ballast at a lower cost, for 26 & 32W lamps, specify **120NPF**.

EMERGENCY BATTERY PACK: Remote mounted EBP, specify **REM** for 109-12. Integral EBP with addition of 1 1/4" deep collar for 109-20. Specify **IEM**

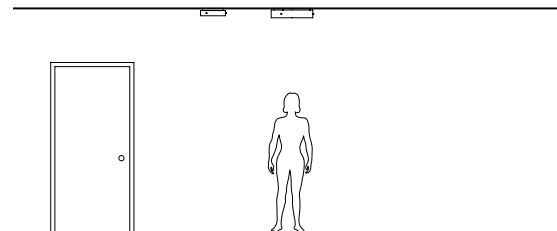
NOTE: Standard electronic ballast is multi-volt and multi-wattage. Fixture will accommodate 26, 32 or 42 watt lamps.

MOUNTING: Standard J-box or plaster ring.

WEIGHT: 109-12: 4lbs
109-20: 6lbs



PHOTOMETRICS
Lighting Sciences Report 22412
Fixture Efficiency: 31.5%



VARIATIONS / MODIFICATIONS

- Special finishes
- Addition of decorative detail
- Punched or laser cut patterns in ring.

SPEC GUIDE SAMPLE SPEC: 109-12-CF1/26-120 -SAL-REM

CAT#	SIZE	LAMPING	VOLT	FINISH	OPTION
<input type="checkbox"/> 109	<input type="checkbox"/> 12	<input type="checkbox"/> CF1/26	<input type="checkbox"/> 120	<input type="checkbox"/> SAL	<input type="checkbox"/> REM
	<input type="checkbox"/> 20	<input type="checkbox"/> CF1/32	<input type="checkbox"/> 277	<input type="checkbox"/> MW	<input type="checkbox"/> IEM
		<input type="checkbox"/> CF1/42	<input type="checkbox"/> 120DIM	<input type="checkbox"/> CCP	
		<input type="checkbox"/> CF2/26	<input type="checkbox"/> 120NPF		
		<input type="checkbox"/> CF2/32			
		<input type="checkbox"/> CF2/42			
		<input type="checkbox"/> T5/40			
		<input type="checkbox"/> T5/55			

