



DESIGN: RANDY BORDEN

Shown in Satin Aluminum



106-12 106-15 IEM

LUMINOUS BOWL

Design
Sustainability
Value



print this page



email this page to a colleague



installation instructions



interactive submittal drawing

COMPANION



FEATURES

- Low profile diffuser.
- T-5 circline lamps provide uniform luminosity.
- Unique geometry.
- Available in two sizes.

MATERIALS

- Solid brass or aluminum metal work, hand finished
- Luminous bowl is white acrylic with a matte finish.

FINISHES

SAL Satin Aluminum

SB Satin Brass

CCP Custom Color Painted finish

Standard metal finishes are hand satined and either waxed or sealed with a water-based clear coat. Other metal finishes are available. Contact factory.

LAMPING

106-12: 1-T5 22W only.

106-15: 1-T5 40W or 55W Circline.

Lamp not included.

BALLAST

Integral electronic HPF, 120V/277V.

See "GENERAL INFO" for more detail.

ECO INFO

METALS: Aluminum and brass with the highest available recycled content for lower embodied energy. Both metals are valuable and recyclable at the end of the product's useful life. For more information see "GENERAL INFO"

FINISHING: Aluminum and Antique Brass finishes are sealed with a hand-applied bees wax. No paint or lacquer is used in order to avoid pollution associated with the manufacture and application of these substances. Satin Brass is clear-coated with a very low VOC water-based coating. Paint finishes are low VOC and oven cured.

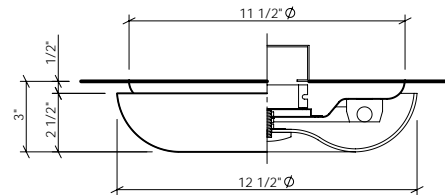
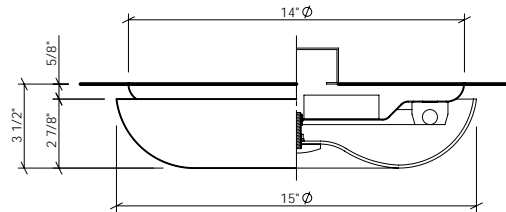
ENERGY: Designed exclusively for T5 circline fluorescent lamps using HPF electronic ballasts.





Shown with Faux finish

106-12 106-15 IEM

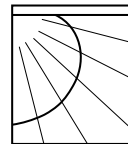


OPTIONS

FAUX: Hand applied faux finish available.

DIMMING: Electronic dimming ballast available.

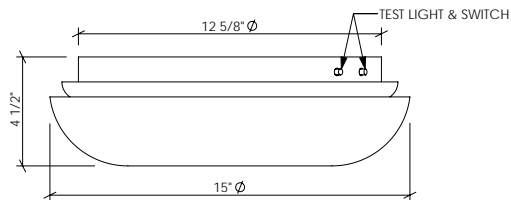
EMERGENCY BATTERY PACK: Integral EBK with addition of 1 1/4 deep collar. Specify IEM.



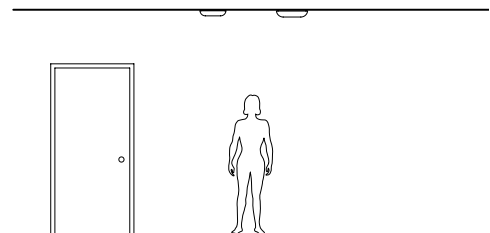
PHOTOMETRICS

Lighting Sciences Report 22410

Fixture Efficiency: 80.6%



EBK CONFIGURATION



MOUNTING: Standard J-box or plaster ring.

WEIGHT: 5 lbs

VARIATIONS / MODIFICATIONS

- Special finishes
- Addition of decorative detail

SPEC GUIDE

SAMPLE SPEC: 106-15-ADD-T5/40-120-SAL-FAUX

CAT#	SIZE	LAMPING	VOLT	FINISH	OPTION
<input type="checkbox"/> 106	<input type="checkbox"/> 12	<input type="checkbox"/> T5/22	<input type="checkbox"/> 120	<input type="checkbox"/> SAL	<input type="checkbox"/> FAUX
	<input type="checkbox"/> 15	<input type="checkbox"/> T5/40	<input type="checkbox"/> 277	<input type="checkbox"/> SB	<input type="checkbox"/> IEM
		<input type="checkbox"/> T5/55		<input type="checkbox"/> CCP	

