



Shown with cream linen shade.

103-14 103-18 IEM

FABRIC SHADE DRUM

Design
Sustainability
Value



print this page



email this page to a colleague



installation instructions



interactive submittal drawing

COMPANIONS



303



503

FEATURES

- Classic drum shape available with a variety of fabric shades.
- Available in two sizes with a variety of lamping options.
- 18" size available with an integral emergency battery pack.

ECO INFO

ENERGY: Designed exclusively for compact fluorescent lamps using HPF electronic ballasts.

FABRIC SHADE: Available with sustainability produced fabrics that are backed with a US made paper backing, that replaces the standard styrene backing. See OPTIONAL FABRICS on Pg. 2.

MATERIALS

- Fabric drum shade.
- White acrylic bottom lens.

FINISHES

MW Matte White

CCP Custom Color Painted finish

Paint finishes are low voc.

LAMPING

103-14: 2-CF13QTT, G24q base or 2-26TTT, G24q base.

103-18: 2-26, 32 or 42WTTT, Gx24q base.

BALLAST

Integral electronic HPF, 120V/277V.

See "SPEC GUIDE" for more detail.



STANDARD FABRIC
Cream Linen

NOTE: All fabrics shown greater than actual size.

103-14
103-18 IEM

OPTIONAL FABRICS: Imported 100% flax linen.



VAN Vanilla



WHT White



OAT Oatmeal

OPTIONAL ECO-FABRICS:

Sustainably produced hemp and organic cotton.

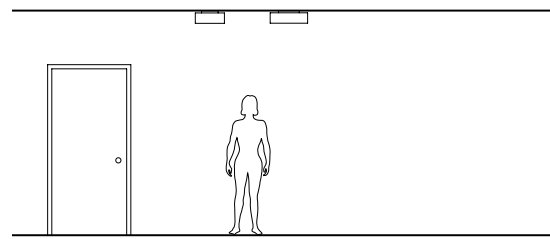
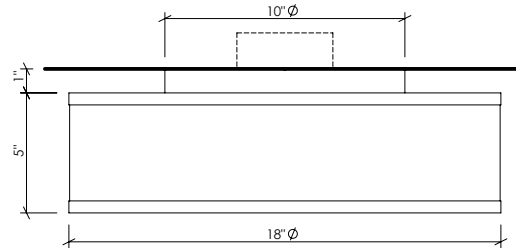
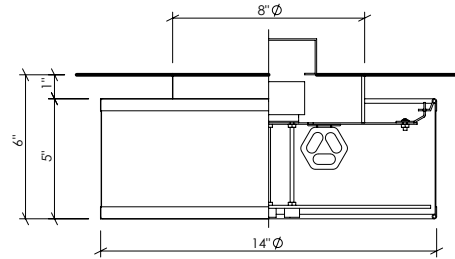


CRH Cream Hemp



HOC Hemp/
Organic Cotton

Click **HERE** to learn more about shade fabrics



OPTIONS

DIMMING: For 2-CF26W lamping only, available electronic ballast with a dimming range of 100-15%, 120 volt only. Ballast dimmable from any incandescent dimmer. Other dimming ballasts available.

EMERGENCY BATTERY PACK: Remote mounted EBP for 103-14. Integral EBP available for 103-18, specify **IEM**.

FABRIC SHADE: Standard, or default, shade is Cream Linen. Optional shade fabrics are shown above. Call factory for other fabrics.

MOUNTING: Standard J-box or plaster ring.

WEIGHT: 5 lbs

VARIATIONS / MODIFICATIONS

- Special finishes
- Special shade fabrics
- Addition of decorative detail

SPEC GUIDE

SAMPLE SPEC: 103-18-CF2/32-277-SAL-IEM

CAT# - SIZE - LAMPING - VOLT - FINISH - OPTION

<input type="checkbox"/> 103	<input type="checkbox"/> 14	<input type="checkbox"/> CF2/13	<input type="checkbox"/> 120	<input type="checkbox"/> SAL	<input type="checkbox"/> IEM
	<input type="checkbox"/> 18	<input type="checkbox"/> CF2/26	<input type="checkbox"/> 277	<input type="checkbox"/> MW	<input type="checkbox"/> VAN (Vanilla)
		<input type="checkbox"/> CF2/32	<input type="checkbox"/> 120DIM	<input type="checkbox"/> CCP	<input type="checkbox"/> WHT (White)
		<input type="checkbox"/> CF2/42			<input type="checkbox"/> OAT (Oatmeal)
					<input type="checkbox"/> CRH (Cream Hemp)
					<input type="checkbox"/> HOC (Hemp/ Organic Cotton)

