

Design  
Sustainability  
Value



DESIGN: DAVID MALMAN



print this page



email this page to a colleague



installation instructions



interactive submittal drawing

### COMPANION



### FEATURES

- Energy efficient low glare light.
- Sand cast aluminum with 100% recycled content.
- Available with T8 or T5 lamps.

### ECO INFO

**METALS:** Sand cast aluminum end caps are made from 100% recycled aluminum. Other aluminum parts have the highest available recycled content for lower embodied energy and are valuable and recyclable at the end of the product's useful life. For more information see "GENERAL INFO"

**FINISHING:** Solid, natural metal finishes are sealed with a hand-applied bees wax. No paint or lacquer is used in order to avoid pollution associated with the manufacture and application of these substances. Clear coat finishes are available. Paint finishes are low VOC and oven cured.

**ENERGY:** Designed exclusively for fluorescent lamps using HPF electronic ballasts.

### MATERIALS

- Sand cast aluminum with 100% recycled content, hand finished.
- Luminous shield is extruded white acrylic with a matte finish.

### FINISHES

**SAL** Satin Aluminum

**MW** Matte White

**CCP** Custom Color Painted finish

Standard metal finishes are hand satined and waxed. Other metal finishes are available. Contact factory.

### LAMPING

2-T8/17W or 2-T5/24WHO

Lamps not included.

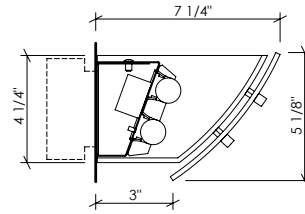
### BALLAST

Integral electronic HPF, 120V/277V.

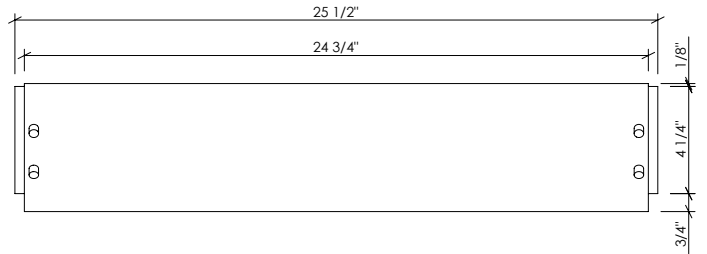
See "GENERAL INFO" for more detail.



# 570 VANITY FIXTURE

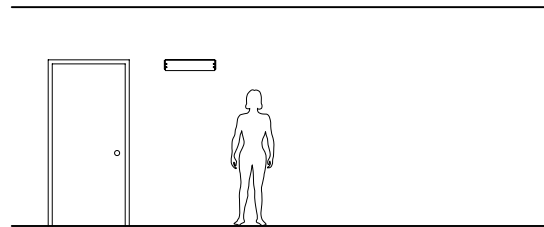


NOTE: THIS FIXTURE REQUIRES A 3" Ø PLASTER RING OR SWITCH BOX



**PROJECT:** St. Peter's Place  
Hud Housing - San Francisco, CA  
**ARCH:** Herman Colliver Locus - San Francisco, CA  
**LTG DES:** ALD/David Malman

**OPTIONS**  
**DIMMING:** Electronic dimming ballast available.  
**EMERGENCY BATTERY PACK:** Integral EBP, specify IEM.



**VARIATIONS / MODIFICATIONS**

- Special finishes
- Addition of decorative detail
- Special lengths

**MOUNTING:** Standard J-box or plaster ring.

**WEIGHT:** 5 lbs

**NOTE:** For T8 lamps this fixture utilizes a high ballast factor electronic ballast for higher lumen output.

## SPEC GUIDE SAMPLE SPEC: 570-T8/17-120-SAL

CAT#	LAMPING	VOLT	FINISH	OPTION
<input type="checkbox"/> 570	<input type="checkbox"/> T8/17 <input type="checkbox"/> T5/24H0	<input type="checkbox"/> 120 <input type="checkbox"/> 277	<input type="checkbox"/> SAL <input type="checkbox"/> MW <input type="checkbox"/> CCP	<input type="checkbox"/> FAUX <input type="checkbox"/> IEM

