

UPDATED 6/11

**552**

**LUMINOUS SCONCE**

**ADA**



Design  
Sustainability  
Value



DESIGN: DAVID MALMAN



print this page



email this page to a colleague



installation instructions



interactive submittal drawing

COMPANION



551



**FEATURES**

- Available in two sizes.
- Clean, simple design is ADA compliant.
- Sand cast aluminum with 100% recycled content.
- Tool-free relamping.

**ECO INFO**

**METALS:** Sand cast aluminum end caps are made from 100% recycled aluminum. Other aluminum parts have the highest available recycled content for lower embodied energy and are valuable and recyclable at the end of the product's useful life. For more information see "GENERAL INFO"

**LUMINOUS SHIELD:** Available with a luminous shield made from 100% recycled polyethylene.

**FINISHING:** Solid, natural metal finishes are sealed with a hand-applied bees wax. No paint or lacquer is used in order to avoid pollution associated with the manufacture and application of these substances. Clear coat finishes are available. Paint finishes are low VOC and oven cured.

**ENERGY:** Designed exclusively for compact fluorescent lamps using HPF electronic ballasts.

**MATERIALS**

- Sand cast aluminum with 100% recycled content, hand finished.
- Luminous shield is extruded white acrylic with a matte finish. Available with 100% recycled polyethylene with a matte finish.

**FINISHES**

**SAL** Satin Aluminum

**MW** Matte White

**CCP** Custom Color Painted finish

Standard metal finishes are hand satined and waxed. Low VOC lacquer available-call factory. Other metal finishes are available. Contact factory.

**LAMPING**

8"w: 1-CF13 DTT, G24q base.

9"w: 1-CF26 DTT, Gx24q base.

**BALLAST**

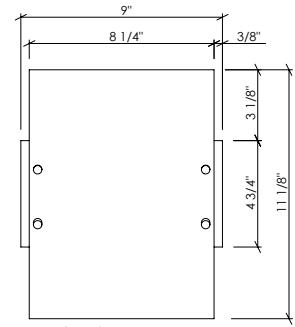
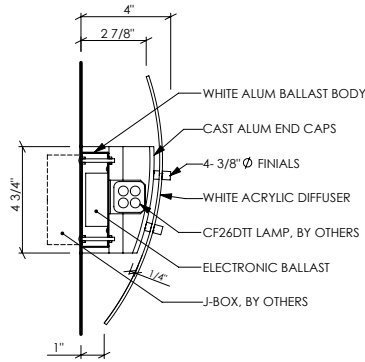
Integral electronic HPF, 120V/277V.

See "GENERAL INFO" for more detail.

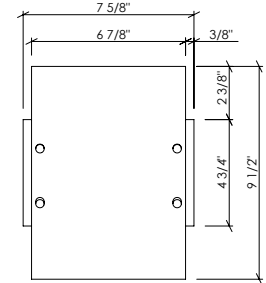




# 552 LUMINOUS SCONCE



**552 - 9**



**552 - 8**

### OPTIONS

**FAUX:** Hand applied faux finish available. Specify **FAUX**.

**LUMINOUS SHIELD:** Available with 100% recycled polyethylene shield for increased sustainability. Specify **PS**.

**NOTE:** Polyethylene shield reduces brightness & transmits approximately 50% less light.

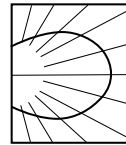
**DIMMING:** Available electronic ballast with a dimming range of 100-15%, 26W, 120 volt only. Ballast dimmable from any incandescent dimmer. Other dimming ballasts available.

**NORMAL POWER FACTOR BALLAST:** This fixture is available with an NPF 120 volt electronic ballast. At a lower cost. Specify **120NPF**

**EMERGENCY BATTERY PACK:** Remote mounted EBP, specify **REM**.

**MOUNTING:** Standard J-box or plaster ring.

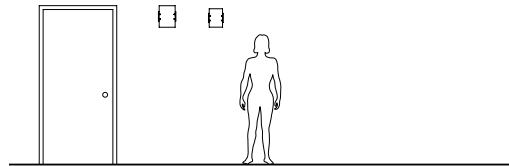
**WEIGHT:** 4 lbs



### PHOTOMETRICS

Lighting Sciences Report No. 23670

Fixture efficiencies 73.2%



### VARIATIONS / MODIFICATIONS

- Special finishes
- Addition of decorative detail

## SPEC GUIDE SAMPLE SPEC: 552-CF1/26-120-SAL-FAUX

CAT#	SIZE	LAMPING	VOLT	FINISH	OPTION
<input type="checkbox"/> 552	<input type="checkbox"/> 8	<input type="checkbox"/> CF1/13	<input type="checkbox"/> 120	<input type="checkbox"/> SAL	<input type="checkbox"/> PS
	<input type="checkbox"/> 9	<input type="checkbox"/> CF1/26	<input type="checkbox"/> 277	<input type="checkbox"/> MW	<input type="checkbox"/> FAUX
			<input type="checkbox"/> 120DIM	<input type="checkbox"/> CCP	<input type="checkbox"/> REM
			<input type="checkbox"/> 120NPF		

