

SHALLOW BOWL 314 / 316

Despite being designed over 60 years ago, the 316 remains one of our best selling fixtures. Maybe it has to do with the trend of "mid-century modern" or maybe it's just that it's an iconic design that has stood the test of time. Originally designed for incandescent lamps, our LED version uses 85% less energy. The 314 adds a downlight component and can light a room up using less energy than a 60w light bulb.

As far as we know, the shallow bowl design can be attributed to a designer by the name of Gross Wood, who had a manufacturing company in San Francisco. Along with his wife Ester, they were the light fixture designers equivalent to Charles and Ray Eames. Their designs were the choice of architects at the time for their "clean contemporary look" and were copied widely by companies like Lightolier and Prescolite.

In an age of Google, you will find very little information on Gross Wood, the company or the designer. To anyone reading this, we would appreciate any information you may have on this important designer. If you click on the link below, and want to know more about him, it will take you to excerpts from a catalog published in 1961.

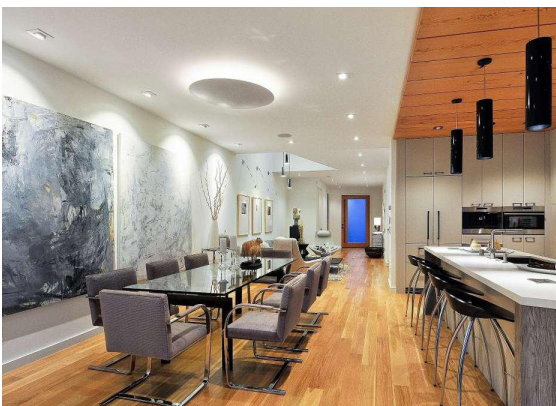
[Learn more about Gross Wood
CLICK HERE](#)



316-36



316-24



316-30



314-20

[Click on an image to go to the catalog page.](#)

[To view more Featured Fixtures and print high quality pdfs](#)



[E-mail a question or comment.](#)