

NEW PRODUCTS

Borden Lighting is proud to introduce three new vanity fixtures. All are purpose-built for LED, available in multiple lengths and at value price points. We are also introducing a family of "carved cylinder" wall mounts and a bollard. All of these fixtures utilize a unique dot matrix grid that reduces glare. The curved reflector is not just decorative, but reflects light right and left for a wider spread. Clicking on an image will take you to the catalog page. For more information, contact your rep or the factory.



E-mail a question or comment.



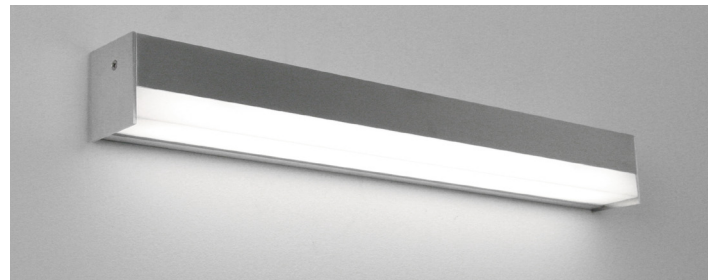
725



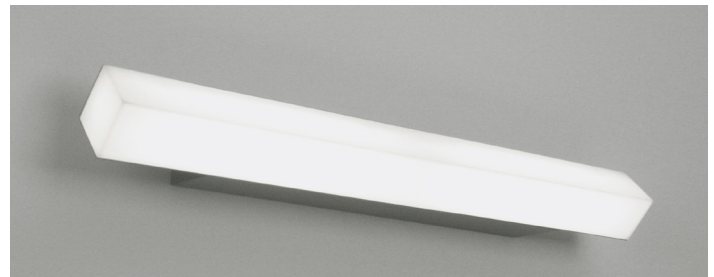
726



926



575



577



578

To view more E-News and print high quality pdfs click [here](#).